

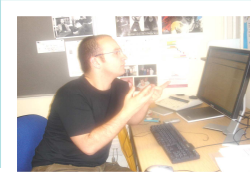
DCAL- Deafness, Cognition and Language Research Centre

www.dcal.ucl.ac.uk



DCAL THEMES

LANGUAGE ASSESSMENT



LANGUAGE PROCESSING



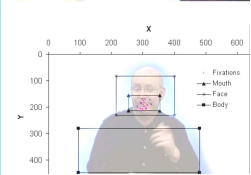
FACE-TO-FACE COMMUNICATION



LANGUAGE DEVELOPMENT



ATYPICAL SIGN LANGUAGE



THE DEAF INDIVIDUAL AND THE COMMUNITY



DCAL'S AIMS

- To learn more about BSL as a human language
- To compare BSL with English and other signed and spoken languages
- To look at how the brain processes BSL compared to other languages
- To assess BSL skills in Deaf adults and children
- To improve the education of Deaf children, by finding out more about how Deaf children learn sign language
- To identify when problems arise in sign language learners and users
- To look at Deaf cultural norms
- To improve interpreting services

Associated projects:



Imaging the Deaf Brain

Early BSL Development



RECRUITMENT

By becoming involved in research at DCAL, you will be:

- Involved in exciting new research
- Contributing to current knowledge about BSL and assisting us in new developments
- Improving the education system for Deaf children and adults
- Helping to make sure there is equality in employment for deaf adults
- Improving services for Deaf signers with usher, autism, and other language impairments
- Helping to prove that BSL is a language and is equal to all other languages
- Encouraging more people to learn about BSL and use BSL outside the Deaf world

Studies can be conducted on-line and participants will be paid for their time

Visit: <http://dcal.sona-systems.com/>



DCAL - Deafness, Cognition & Language Research Centre,
University College London, 49 Gordon Square, London, WC1H 0PD
Tel: +44 (0)20 7679 8679 Fax: +44 (0)20 7679 8691
Textphone: +44 (0)20 7679 8693
Email: dcal@ucl.ac.uk

